



GATEWAY TO THE
LAUREL HIGHLANDS.

February 2025

DONEGAL DENTAL CENTER

3846 State Route 31
Donegal, PA 15628

724-593-5555



Join Us!

Snowman Contest

March 17-31, 2025

Golf Outing

Friday, May 16, 2025

Fun Map

May 2025

There is no place like home.

We are here to help you with all of your real estate needs.
Call us today to get started!



Josh Crowe
REALTOR®
JCrowe@TPRSold.com
(O) 724-593-6195
(C) 724-454-2356
Adrienne Abe Wagner
412-897-8535

FREE MARKET ANALYSIS

This certificate entitles you to a **FREE Market Analysis** of your property by Josh Crowe. Contact Josh to schedule an appointment.
Josh Crowe • 724-454-2356 • JCrowe@TPRSold.com



BERKSHIRE HATHAWAY
HomeServices
The Preferred Realty

©2025 BHH Affiliates, LLC. An independently owned and operated franchisee of BHH Affiliates, LLC. Berkshire Hathaway HomeServices and the Berkshire Hathaway HomeServices symbol are registered service marks of Columbia Insurance Company, a Berkshire Hathaway affiliate. Equal Housing Opportunity. Information not verified or guaranteed. If your home is currently listed with a Broker, this is not a solicitation.

A Message from Deanna

February 2025

Happy Valentine's Day! There is so much to love about the **MLCC** including all of our amazing members and wonderful, supportive community. A special thank you to everyone who was a part of the Annual Stocking Stuffer ticket. Thank you for your support and congratulations to our winner!



Deanna Richter
MLCC President

Be sure to keep all of our **MLCC members** in mind when doing your Valentine's Day shopping. Candy, flowers, jewelry, unique gifts and more can all be found at one of our members retail shops. Don't forget gift cards make a wonderful gift and even our seasonal members offer them through their websites. Probably the most popular Valentine's Day gift is going out for dinner. Visit MLChamber.com and navigate to the Directory tab to find all the **MLCC member** restaurants. Click on their links to learn more about their specials for Valentine's Day.

Looking ahead, there are more ways to show your love for the **MLCC!** The **annual Snowman contest** will be held the last 2 weeks of March (March 17th-31st), be sure to snap photos of any snowmen you build between now and then to submit! Mark your calendars for the **26th Annual MLCC Golf Outing** which will be held on **Friday, May 16th** at **Norvelt Golf Club**. Sponsorship opportunities as well as team and individual player signups will be available soon.

For our **MLCC** members, you will be receiving information on advertising in our **MLCC Fun Map**. The Map will be distributed in May. The map is a great way to not only show visitors where they can find you but also promote your business, events, or specials. The **MLCC** has seen great success with this piece throughout the years with tourists to the area. Contact Stef for more information or to reserve your spot right away!

On behalf of the **MLCC**, we appreciate you and thank you for being part of the **MLCC community**. We hope your Valentine's Day is filled with family, friends, and happy moments that become favorite memories.

Sincerely,
Deanna Richter
MLCC President
LHTC Broadband



Happy Valentine's
Day

Join us when the snow flies!

Build a Snowman Challenge

READY - SET - BUILD

Gather your family, friends, or coworkers (or let the snow fly solo!) and build an awesome snowman throughout January, February, and March. Take a picture and save it to post on the official contest post from March 17th to the 31st.



Save the Date

26TH ANNUAL GOLF OUTING

NORVELT GOLF CLUB
168 HOLLY PLACE ~ MT. PLEASANT, PA 15666

FRIDAY MAY 16TH 2025

Follow Us Online www.mlchamber.com

Donegal Dental Center

MARK A. NISTA D.M.D.

724-593-5555

Affordable Dentures...Smile Makeovers
3846 State Route 31, Donegal PA 15628

EMERGENCIES SEEN PROMPTLY!

All Your Dental Needs Under One Roof:

- All General, Cosmetic, and Restorative Dentistry
- Gentle Cleanings
- Comfortable Dentures and Lasting Dental Implants Restored
- Oral Surgery
- Single-Visit Root Canals
- State-Of-The-Art Facility
- Modern Sterilization

**New
Patients
Welcome**

**Very
Affordable**

**Very
Convenient**

Always Affordable, Always Convenient:

- FINANCING PLANS AVAILABLE (OAC)
- We Participate with Most Insurance Plans
- Most Insurance Filed For Your Least Out-Of-Pocket Expense
- Walk-Ins Welcome
- Immediate Emergency Care

APPALACHIAN FLUID POWER

"hydraulics & pneumatics... it's what we do"

3364 State Route 31, Acme, PA 15610

724-593-8333

Monday thru Friday, 8 am - 5 pm

Need hydraulic hose, fittings or assembly equipment?

With our new partner Texcel Rubber ~ we can help!



- Hydraulic hoses made - while you wait!
- Bulk hose & fittings available and hose kits too.
- Adapters, quick disconnects, hose wraps & more.
- Largest inventory and best pricing in the area.
- Crimpers, Saws, and Hose Cleaning equipment.



Check us out, you'll be glad you did!

Amerikohl Aggregates

State Approved Limestone

We Have Rock - We Haul Rock - We Guarantee Rock
724-593-4464 /// www.amerikohl.com

Firestone Insurance Agency, LLC
 724-455-3900

The Sharp Pencil People

Your Local Independent Insurance Agency

Auto – Home - Business

Ranked #6 Small Team in the USA!!

The Scott Ludwick Team is made up of five licensed experienced agents. Each agent brings their own set of expertise to the field.

SCOTT LUDWICK TEAM

(O) 724-261-5637 • (C) 724-433-7800

ScottLudwick.com

Meet the Team



Doug Bryga



Jacob Noel



Scott Ludwick



George Lander



Helene Nsier

Thank You for your continued support and votes!



BERKSHIRE HATHAWAY
HomeServices

The Preferred Realty

©2022 BHH Affiliates, LLC. An independently owned and operated franchisee of BHH Affiliates, LLC. Berkshire Hathaway HomeServices and the Berkshire Hathaway HomeServices symbol are registered service marks of Columbia Insurance Company, a Berkshire Hathaway affiliate. Equal Housing Opportunity.



TRI COUNTY

Sales, Service, Installation, & Parts

Wholesale Metal Roofing & Siding Supply

Pole Buildings Building Packages Gutters

Doors & Windows Garage Doors & Accessories

Lowest Steel Prices in the county!

724-424-2700

Contractor Pricing Available!

Call or Txt

Tricountybuildingsupplier.com

2984 State Route 31 Acme, PA 15610

The **Mountain Laurel Chamber of Commerce** wishes to congratulate **Harley Alma**, from **Champion Christian School**, for being the recipient of the **December 2024 Student of the Month Award**, sponsored by: **LCT Energy, LP**.

“Harley is a 6th grader at Champion Christian School and has been with the school since 3rd grade when moving to Pennsylvania from San Francisco, CA. She has been on the soccer team, track & field, and volleyball team. Her favorite is volleyball! Harley has worked hard and has been doing amazing. We are so proud of how far she has come with all obstacles thrown her way. Her dream is to be an archaeologist. Harley attends Indian Head Church of God where she is part of the Bible Quiz Team.”

**DECEMBER
2024
STUDENT
OF THE
MONTH**

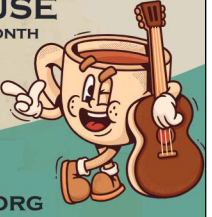
Champion Christian School
VISIT DAY
Thursday, February 6 & Tuesday, March 4
North Campus & South Campus
4:00 pm - 7:00 pm
724-593-9200
info@champion.org



CHRISTIAN FAMILY & CHILDREN'S CENTER

coffee HOUSE
FELLOWSHIP
COFFEE
MUSIC
FIRST FRIDAY OF EVERY MONTH
**FEBRUARY 7
& MARCH 7**
6:00 - 8:00 PM

724-593-9200
INFO@CHAMPION.ORG



Christian Family & Children's Center | Coach Bus Trip

ELEVATION WORSHIP
ELEVATION NIGHTS TOUR
STEVEN FURTICK

Friday, February 28 | 724-593-9200

m museum of the Bible




Christian Family & Children's Center | Coach Bus Trip
Saturday, April 5 724-593-9200

BLOOD DRIVE

WHERE: Christian Family & Children's Center
1076 King's Way | Donegal

WHEN: Tuesday, March 11
12:30 pm - 5:30 pm

You can sign up online at redcrossblood.org (use code ChampionCS) or call us at 724-593-9200.



Christian Family & Children's Center | Coach Bus Trip

WINTERJAM '25
MARCH 8

724-593-9200



Christian Family & Children's Center
Coach Bus Trip

Friday, March 28

SIGHT & SOUND THEATRES
NOAH
30TH ANNIVERSARY

724-593-9200
info@champion.org



Hemminger Homes, Inc

- ~ Custom Modulars ~ Complete Construction
- ~ Sectionals ~ Model homes on display
- ~ Singlewides ~ Financing Assistance



~ Visit our Parts and Supply Store



1023 Baer Lane

Somerset PA 15501

800-634-4687 or 814-443-4855

MHBR NO. 2043 NMLS#101157

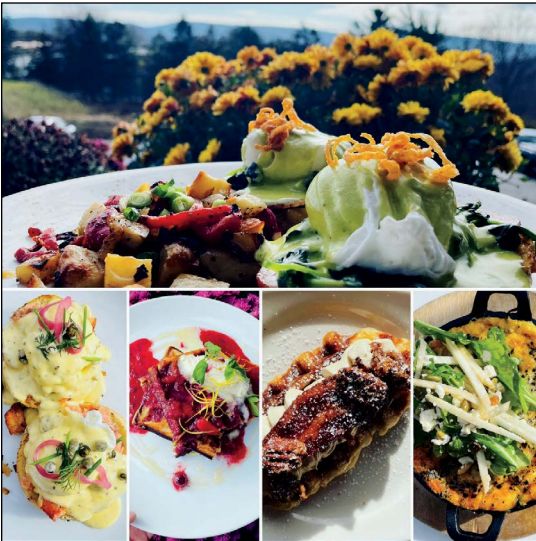
Enjoy life in your new custom designed home by

Hemminger Homes, Inc.

Complete Manufactured Home Center

Family owned and operated

Since 1972



724-259-8887

Donegal, PA
outofthefirecafe.com

Join Us!

SUNDAY BRUNCH - 10AM-2PM



PROFESSIONAL
POOPOLOGIST

(724) 238-4366 ~ (724) 423-4130

(724) 593-7457 ~ (724) 455-7457

A A Septic Tank Service

Mt. Pleasant, PA



www.aaseptic tankservice.net





Share your *Heart* Today

Donegal Dairy Queen
Route 31 - Donegal
724-593-7527



\$5.00 OFF
Any Dairy Queen Cake
EXPIRES 2/28/2025



Please present ad at Donegal DQ, **single use only** - Expires 2/28/2025
No photo copies accepted

Al Meucci Real Estate



Specializing in Sales & Resort Rentals

michele@almeuccirealestate.com

**Allow me to be your
listing or buying agent!**

2536 County Line Rd.
PO Box 113
Champion, PA 15622

Office (814) 352-7669

almeuccirealestate.com



Michele Meucci

The Ultimate Wood Heat

More convenience, safety and savings than any other method of wood heat.



JM Mountain Top Heating

327 George Prinkey Road
Normalville, PA 15469
(724) 433-6093

www.mountaintopheating.com



Outdoor Furnaces

CentralBoiler.com

88%
Efficiency

26% tax credit
On qualifying models and installations

*U.S. Internal Revenue Code Sec. 25(D) effective Jan. 1, 2021, for heating a residence. For more details visit CentralBoiler.com. Information provided here as a convenience and may not be relied upon as a substitute for professional tax advice. Consult a tax professional with any questions.

SURGE WATER CONDITIONING

30 yr. Business built
on customer referrals

(724) 537-8599
www.surgewater.net



Happy Valentine's Day

from your local Berkshire Hathaway Homeservices
The Preferred Realty REALTORS® in the Laurel Highlands

IT'S A GREAT TIME TO BUY OR SELL YOUR HOME.

Let's find out how much your home is worth.

CONTACT US TO GET STARTED!



Erin Mikolich
Agent
814-233-7318



Mike Mikolich
Agent
814-233-6022



Kathy Corbett
Agent
814-442-2643



Valerie Gontis
Associate Broker
814-421-1029



Josh Crowe
Agent
724-454-2356



Abe Wagner
Associate Broker
412-897-8535



Sara Phillips
Agent
724-470-8775



Tonya Dues
Agent
904-994-6684



Lori Syster
Agent
412-559-7645



Autumn Jade Cordaro
Agent
724-562-8302

800-419-7653

Laurel Highlands Office


3802 State Route 31, Donegal, PA 15628

CONTACT US FOR A FREE MARKET ANALYSIS

BERKSHIRE HATHAWAY

HomeServices

The Preferred Realty

 A member of franchise systems of BHHs Affiliates, LLC

Follow Us Online www.mlchamber.com



We have rentals dates available at

The Donegal Event Center

Come celebrate your special event with your dear friends and family at our rental!

113 COMMUNITY CENTER LN.
JONES MILLS, PA 15646
INFO@THEDONEGALEVENTCENTER.COM

thedonegaleventcenter.com





Ligonier
(724) 238-6889

Melcroft
(724) 455-3842

Now Selling Wood & Pellet Stoves and Smokeless Coal Stoves!

Highlands Quality
Climate Control
LOVES our
customers!

Give us a call to keep
your sweetheart
comfortable all year



Comfortmaker
Air Conditioning & Heating



\$20.00 OFF

ANY SERVICE

Must present coupon - expires 2/28/2025

www.highlandsheating.com

Follow Us Online www.mlchamber.com

LIST WITH YOUR LAUREL HIGHLANDS REALTY EXPERTS!



HAROLD SCOTT SWANK
Broker of Record
814-233-3361
sswank@highlandsresortrealty.com



JOHN TIERNEY
Associate Broker
814-572-8383
jtierney@highlandsresortrealty.com



MICHELLE BUCCILLI
Realty Agent
814-289-1886
mbuccilli@highlandsresortrealty.com



JENNY HARANCHER
Realty Agent
814-769-3833
jharancher@highlandsresortrealty.com



DALE MCKINLEY
Realty Agent
814-233-0755
dmckinley@highlandsresortrealty.com



JOHN NICHOLS
Realty Agent
724-454-9938
jnichols@highlandsresortrealty.com



TRENT WALTERS
Realty Agent
814-233-9810
twalters@highlandsresortrealty.com



PROUDLY SERVING THE
LAUREL HIGHLANDS!
800.227.7502
HighlandsResortRealty.com

RBO6698 | Broker of Record, Harold Scott Swank | RM421460



AMERICAN SEWER SPECIALISTS
Sewer Line Repair and Replacement

WE INSTALL & REPAIR SEPTIC SYSTEMS

- ZERO Dig Liner System
- Sewer Line Clean Out
- Sewer Traps
- Hydro-jetting
- Dye Testing
- French Drains
- Tank & Line Locating
- Root Removal
- General Excavating



CALL TODAY!



(724) 433-0905

www.americansewerspecialist.com

Cenkner Engineering, Inc.
Consulting Engineers & Land Surveyors
Since 1976



340 Church Street
Donegal, PA 15628
(724) 262-1000 Office
(724) 424-3811 Fax

www.cenkner.com



**STOP IN AND RELAX
AFTER A DAY ON
THE SLOPES!**

\$5.00 OFF
A Food Purchase of
\$25 or more with
this coupon
EXPIRES 2/28/2025

**"THE LAUREL HIGHLANDS
BEST KEPT SECRET"**



**DJ EVERY SUNDAY & WEDNESDAY
LIVE MUSIC FRIDAY & SATURDAY**

Open 7 days a week
Kitchen until 10pm
Bar until 2am



595 Clay Pike Rd.
Acme, PA 15610
rodneycorner.com

(724) 423-9789



Do you have questions or concerns?



Denise Kintigh
INSURANCE SERVICES

(724) 455-8757 ~ (412) 671-8757



- ✓ Medicare Planning/Health
- ✓ Insurance Planning
- ✓ Retirement Planning
- ✓ Income Planning
- ✓ Legacy Planning

LIFE INSURANCE
is *Love* **INSURANCE**



www.pennsylvaniabestmedicare.com



GNAGEY
Gas & Oil - Propane



Locally Owned
and Operated for
80 years


Phone:
724-437-5495

Website:
Gnageyoil.com

**FLEXIBLE PAYMENT
OPTIONS:
BUDGETS
AVAILABLE**



Low-Income Home Energy Assistance Program

NovaCare[®]
REHABILITATION

The Power of Physical Therapy

1 Braddock Avenue, Suite B
Mount Pleasant, PA 15666
(724) 547-6090

**Come in for a complimentary
consultation with our licensed
physical therapist**

Available Services Include:
Pediatrics & Geriatrics
Sports Injuries & Work-Related Injuries
Pre-Surgical & Post-Surgical
Balance Problems & Vertigo
And plain old aches and pains

Most Insurances Accepted
Before & After work appointments available



(724) 317-3594

handymanhall77@gmail.com

No Job too Small!

Free Estimates

NEW CENTERVILLE STOVE WORKS

9 am to 4 pm Mon - Fri
9 am to Noon Saturday
Closed Sunday
Evenings by Appointment

Jim Hall
PA091097
(814) 926-9961

3822 Water Level Road
Rockwood, PA 15557



hallshandyman servicellc.com

If you are
MEDICARE eligible or **PA**
Individual Health Insurance
eligible and
CONCERNED about the choices
YOU have to make?
call:

Dan McCue - F&GS, Inc.
(724) 593-2081 or (800) 628-7804

PORT-A-STORAGE

Stahlstown, PA
Mini Storage Units Available

10' x 23' @ \$65.00/mo.
(including tax)

10' x 11' @ \$40.00/mo.
(including tax)

724-493-6254

SPARK OF LOVE
DONATE TO CRCVFC

Show some LOVE to your local HEROES!

DONATE ONLINE!

www.CRCVFC.com

Mail To: P.O. Box 160 Stahlstown, PA 15687

*Share the Love,
Share the Energy*



Happy Valentine's Day



LCTenergy.com

JASMINE SPA

Gift  Certificates



Solo & Couples
Body work & Reflexology



OPEN 7 DAYS A WEEK
224 Crossroads Plaza, Mt. Pleasant **724-961-5953**



**RUSTIC LODGE
FOR GROUP
RESERVATIONS**

Sleeps up to 40
Large open area
with Fireplace

Great for Parties &
Family Gatherings

(724) 433-9790

118 Pine Slopes Road
Acme, PA 15610

YOUR OPPORTUNITY TO ASK THE ATTORNEY



Bradley A. King, Esq
King Legal Group, LLC
Jones Mills
724-836-1500

Q I'm married, but my husband and I are not on good terms. I want to write my husband out of my Will to make sure all of my assets go to my siblings if I die before him. Is this possible?

A Pennsylvania law provides a spouse with an "elective share" in the estate of a spouse who has passed away, regardless of how the Will is drafted. Unless a divorce is official or, in some situations, divorce proceedings have been commenced, the surviving spouse is entitled to a spousal elective share, which allows him or her to elect to take a 1/3 share of certain property of the deceased spouse, including assets passing through the estate of the deceased spouse.



KING LEGAL GROUP, LLC
ATTORNEYS AT LAW

- Workers' Compensation
- Real Estate
- Injury Cases
- Estate Planning

Please Email Your Questions to bking@kinglg.com

#1 IN THE #2 BUSINESS

Find us on Facebook



Family Owned and Operated

724-547-3697
www.topseptic-tank-service.net



Erie Insurance

Above all in service - since 1925

Auto • Home • Business • Life
Sadler-Bruner Insurance Agency
4111 State Route 31
Jones Mills, PA 15646-1000
www.brunerinsurance.com
724-593-2440

5891 Not all companies are licensed or operate in all states. Not all products are offered in all states. Go to erieinsurance.com for company licensure and territory information.

Hughes Physical Therapy Services, LLC

Meeting your physical therapy needs, close to home.

WE CARE! Hours available by appointment
ACCEPTING MOST INSURANCE AND UPMC

Hughes Physical Therapy Services, LLC
is located at:
3802 State Rt. 31, Suite 2, Donegal, PA 15628

Phone: (724) 593-8880 & (724) 593-8881
Fax: (724) 593-8882

www.hughestherapy.com

Like us on Facebook

Building it right!

JASON'S CARPENTRY

Man Lift
Rental



- New Construction
- Remodels
- Siding
- Decks
- Soffit and Facia
- Garages
- Porches



724-244-9956

165 Fort Hill Road
Stahlstown, PA 15687
PA# 011620

LONELY OAKS TIMBER

Melcroft, PA
Established 2017



Logging, Custom Sawing & Forestry Services
Dealer of Stens Chainsaw Bars, Chains, & Parts
Family Forest Carbon Program-Approved Forester

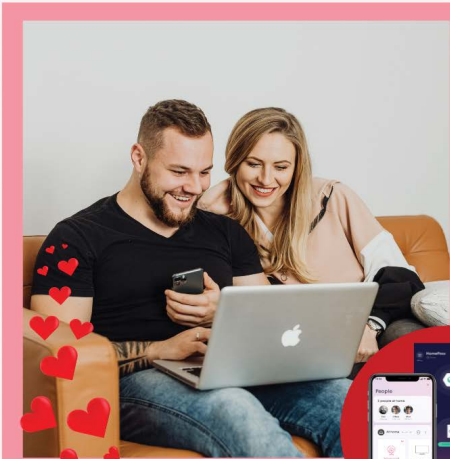
Don't let a dull chainsaw
slow you down this
firewood season!

Chainsaw Sharpening and
New Bars and Chains by the
Stens Company

Call for pricing and availability!
Josiah "Si" Knopsnider
(724) 984-2225



You'll Love to LEVEL UP



WITH
Plume®
Powered by
Plume HomePass®

Level up your Internet with whole home
Wi-Fi coverage, parental controls and
cyber security.

TO LEARN MORE
CALL OR VISIT US AT:

724-593-2411
www.LHTCBroadband.com



The Mountain Laurel Chamber of Commerce (MLCC) is excited to announce the return of the wildly successful

Gateway to the Laurel Highlands

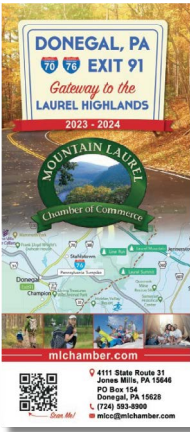
FUN MAP



Up to 30,000 Copies To Be Distributed Over 2 Full Years

The Map

17" x 23" glossy double sided full color Fun Map folds to 4" x 9" (includes an interactive online map on the MLCC website)



The Exposure

- Laurel Highlands Visitors Bureau Racks
- MLCC Website (interactive & downloadable)
- MLCC Member Locations
- 91 PA Turnpike Interchange
- Laurel Highlands Visitors Centers
- Participating State Parks
- Multiple Chamber of Commerces
- PA Welcome Centers Spanning 5+ Counties

The Opportunity

Surrounding the Fun Map is a very limited amount of ad space waiting to be filled by our local businesses that are the most relevant to the visitors and tourists of the Laurel Highlands region

Early bird special 10% off if paid by March 10th, 2025.

All ads and payment in full must be received by MLCC by April 1st, 2025.

Reserve your space today or become an MLCC member by contacting MLCC at stef@mlchamber.com



LET US
WARM YOUR HOME!

After Hours Service - Free Estimates - All Work Guaranteed!



Whole Home Comfort... Year Round!

724-258-9246 Satisfaction Guaranteed! 724-455-9950



Happy
Valentine's Day

LAUREL HIGHLANDS.

Office Hours;

Mon, Wed & Fri: 9-2

or by appointment

Phone: 724-593-8900

Fax: 724-593-8900

Web: mlchamber.com

Email: mlcc@mlchamber.com

Advertise with us! Reach 7,500 local doors.

Enhancing economic growth and development of the business community by offering a variety of services and programs to meet the needs of businesses, residents, and tourists.

MLCC
PO Box 154
Donegal, PA 15628

PRSR7 STD
U.S. POSTAGE

PAID

GREENSBURG, PA
PERMIT NO. 88